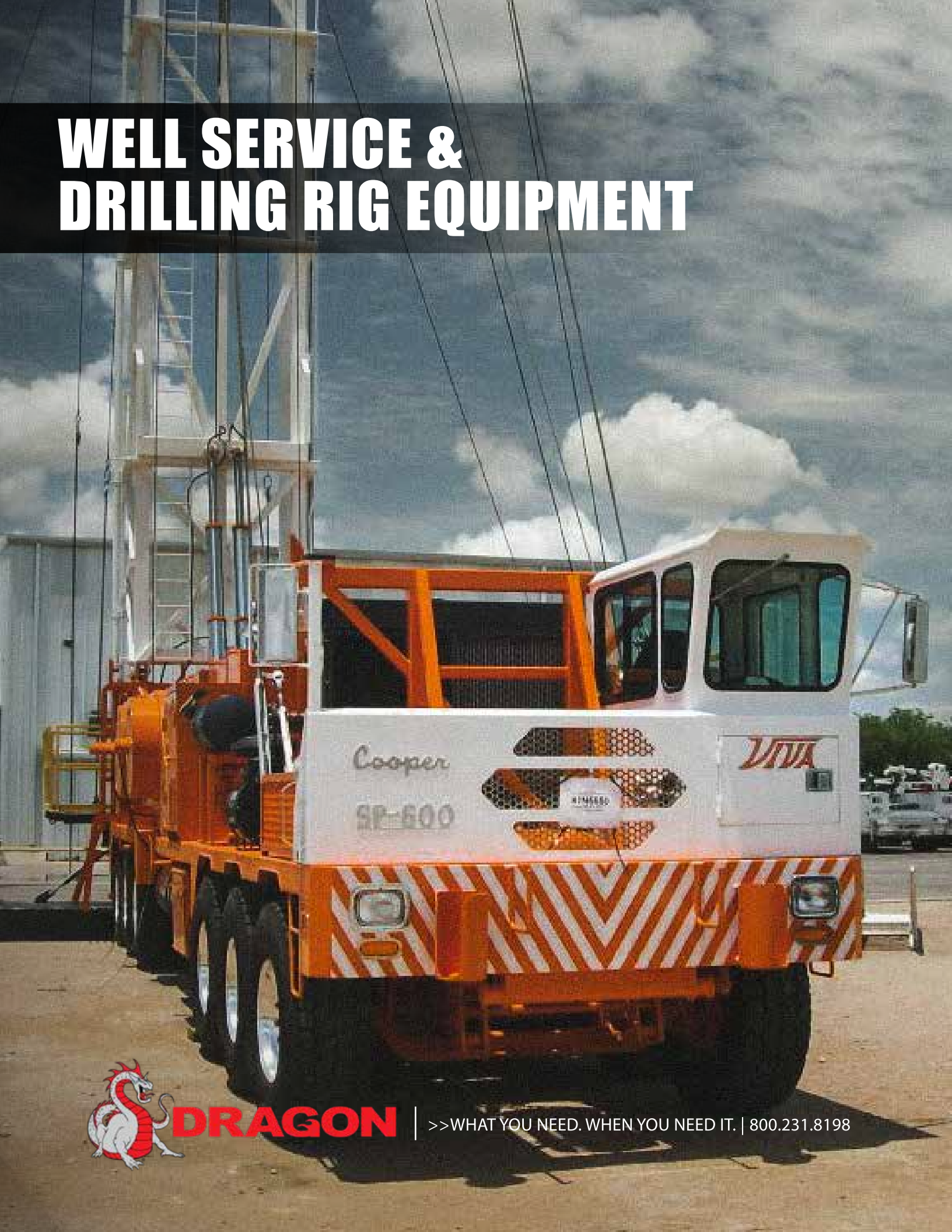


WELL SERVICE & DRILLING RIG EQUIPMENT



DRAGON

| >>WHAT YOU NEED. WHEN YOU NEED IT. | 800.231.8198

**YOU ARE IN THE
BUSINESS OF GETTING
THE JOB DONE.**

**WE ARE HERE TO
HELP YOU SUCCEED.**

We manufacture a full line of 300 to 1,000 HP Cooper rigs at our state-of-the-art U.S. facility, keeping close control over every detail to ensure high quality. Our mobile rigs are purposefully engineered and built to be simple, safe, strong, and easy to operate. Our efforts to facilitate your success do not stop with the design. Every rig that comes from Dragon comes with extra support before, during, and after the sale to help keep your equipment and your business operating. Including 24/7 access to our skilled service teams and vast parts inventories. We are always here for you, because we know you do not want downtime. If you want quality, dependability and the support of a long-standing mobile rig expert backing you up.

That's Dragon. Make it happen.



DRAGON



Dragon rig parts; what you need to do the job – right.

Mobile rigs are so valuable because they're so versatile. The rig gets to the site and gets to work. Yet one worn out part can bring the whole system down. Having the right parts in the right place at the right time is essential to keeping your mobile rigs working and your operation running. This is where Dragon comes in.

Contents

- Cooper SP300 Mobile Servicing Rigs..... 4
- Cooper SP400 Mobile Servicing Rigs..... 5
- Cooper SP400CA Mobile Servicing Rigs 6
- Cooper SP550 Mobile Servicing Rigs..... 7
- Cooper SP600 Mobile Servicing Rigs..... 9
- Cooper SP650 Mobile Servicing Rigs.....10
- Cooper TR750 Mobile Drilling Rigs11
- Cooper TR1000 Mobile Drilling Rigs12
- Base Beams13
- 440 Triplex Mud Pumps14
- 225BBL Premi x Mud System.....15
- Mckissick Blocks.....16
- Brake Blocks17
- Drawworks.....18
- Dragon Masts..... 20



CLUTCH PARTS



440 MUD PUMP



CHAIN



WPT WATER BRAKE



HYDRAULIC CYLINDER



PARMAC
HYDROMATIC BRAKES



BEARINGS



AIR VALVES



HYDRAULIC JACKS



RIGHT ANGLE BOXES



MCKISSICK BLOCKS



BRAKE FLANGES



71-150-4-T MAST:
 Certification: API 4F,
 Clear height: 71'

MAXIMUM STATIC LOAD:
 150,000 lbs on 4-lines

ROD BOARD CAPACITY:
 (25' rod joints in double stands)
 208 stands (10,400')—3/4" sucker rod
 156 stands (7,800')—1" sucker rod

CAPACITY, TUBING BOARD:
 (31' long joints in single stands)
 11,780 ft—2 3/8" EUE tubing
 7,750 ft—2 7/8" EUE tubing

Maximum wind rate: 57 knots (66 mph)



Cooper SP300 Mobile Servicing Rig

Certifications..... API 4F
 Mast capacity..... 150,000 lbs [4-lines]
 Mast height..... 71'
 Tubing/rods..... Single tubing/double rods

Drawworks

Main Drum..... 38" dia x 10" wide x 1" grooving with P0224 clutch
 Sand Drum..... 38" dia x 8" wide with PO 124 clutch
 Sand Drum Capacity..... 14,000' of 9/16" cable
 Assist Brake..... Air cooled disc brake [optional]
 Drawworks brake system..... Conventional band brakes.
 Drawworks brake system cooling..... Open circuit splash.
 Engine HP rating..... 350-400

Power Flow

Trans to rear drive axles..... 1710 Spice drive shaft.
 Trans to RAD gear box..... 1710 Spicer drive shaft
 RAD gear box to sand drum..... 140-1 chain
 Sand drum to main drum..... 140-1 chain
 Carrier..... 4 axle, 2 steer axles and 2 drive axles.
 Maximum travel speed..... 55 mph
 Service Winch..... 12,000 lb capacity
 Workfloor..... Hydraulic fold and unfold.



96-205-6-T MAST:
 Certification: API 4F,
 Clear height: 96'

MAXIMUM STATIC LOAD:
 205,000 lbs on 6-lines
 180,000 lbs on 4-lines

CAPACITY, TUBING BOARD:
 [31' long joints in double stands]
 23,188 ft — 2 3/8" EUE tubing
 18,104 ft — 2 7/8" EUE tubing
 9,920 ft — 3 1/2" EUE tubing

ROD BOARD CAPACITY:
 [25' joints in triple stands]
 192 stands [14,400']—3/4" sucker rod
 144 stands [10,800']—1" sucker rod

Maximum wind rate: 57 knots (66 mph)

Cooper SP400 Mobile Servicing Rig

Certifications..... API 4F
 Mast capacity..... 205,000 lbs [6-lines]
 Mast height..... 96'
 Tubing/rods..... Double tubing/triple rods

Drawworks [other options available]

Main Drum..... 38" dia x 10" wide x 1" grooving with
 P0224 clutch
 Sand Drum..... 38" dia x 8" wide with PO 124 clutch
 Sand Drum Capacity..... 14,000' of 9/16" cable
 Assist Brake..... Air cooled disc brake

Drawworks brake system..... Conventional band brakes.
 Drawworks brake system cooling..... Open circuit splash.
 Engine HP rating..... 400-450

Power Flow

Trans to rear drive axles..... 1710 Spicer drive shaft.
 RAD gear box..... 1810 Spicer drive shaft
 RAD gear box to sand drum..... 140-1 chain
 Sand drum to main drum..... 140-1 chain
 Carrier..... 5 axle, 2 steer axles, 2 drive axles, one
 tag axle.

Maximum travel speed..... 55 mph
 Service Winch..... 12,000 lb capacity
 Workfloor..... Hydraulic fold and unfold.





97-205-6-FS MAST:

Certification: API 4F,
Clear height: 97'

MAXIMUM STATIC LOAD:

205,000 lbs on 6-lines
180,000 lbs on 4-lines

CAPACITY, TUBING BOARD

(31' joints in double stands)
20,832 ft—2 3/8" EUE tubing
17,112 ft—2 7/8" EUE tubing

ROD BOARD CAPACITY:

(30' joints in double stands)
220 stands (13,200')—3/4" sucker rod
178 stands (10,680')—1" sucker rod

Maximum wind rate: 50 knots for free standing configuration. 57 knots (66 mph) for externally guyed configuration



Cooper SP400CA Mobile Servicing Rig

Purple Permit Legal for use in California

Rated horsepower, engine 425 hp
Carrier 5 axle—Two steer and three drive axles.
Diameter, wireline. 1" for 205,000 lb capacity
Road Traveling dimensions 60' long x 10' wide x 13'-5" high
Traveling weight 100,000 lbs estimated
(weights include drill line, tubing block, sandline, standpipe, and fluids)

DRAWWORKS SYSTEM MAIN DRUM

Brake rim diameter x width 38" dia x 10" wide
Barrel diameter x width 16" dia x 38" wide (excluding lebus)
Model, clutch WPT PO-224

SANDLINE DRUM

Brake rim diameter x width 38" dia x 8" wide
Barrel diameter x width 12 3/4" dia x 43" wide
Model, clutch WPT PO-124
Sand drum capacity. 14,000' of 9/16" cable

ASSIST BRAKE - AIR COOLED DISC BRAKE

Brake caliper model Kobelt 5026
Brake rotor measurements 40" dia x 7" braking surface x 4" thick



105-250-8-U MAST:
 Certification: API 4F, 5th Edition
 Clear height: 105'

MAXIMUM STATIC LOAD:
 250,000 lbs on 8-lines
 225,000 lbs on 6-lines

CAPACITY, TUBING BOARD:
 (31' long joints in double stands)
 25,792 ft—2 3/8" EUE tubing
 19,840 ft—2 7/8" EUE tubing
 10,912 ft—3 1/2" EUE tubing

ROD BOARD CAPACITY:
 (25' joints in triple stands)
 208 stands (15,600')—3/4" sucker rod
 156 stands (11,700')—1" sucker rod

Maximum wind rate: 57 knots (66 mph)

Cooper SP550 Mobile Servicing Rig

Certifications..... API 4F
 Mast capacity..... 250,000 lbs [8-lines]
 Mast height..... 105'
 Tubing/rods..... Double tubing/triple rods

Drawworks

Main Drum..... 42" dia x 12" wide x 1" grooving with P0324 clutch
 Sand Drum.....
 Sand Drum Capacity..... 42" dia x 8" wide with P0224 clutch
 16,000' of 9/16" cable

Assist Brake—[three options]..... Air cooled disc brake. [shaft mounted]
 202 Hydromatic brake.
 224 Water Cooled brake. [shaft mounted]

Drawworks brake system..... Conventional band brakes.
 Drawworks brake system cooling..... Open circuit splash or optional water circulating system.

Engine HP rating..... 550

Power Flow

Trans to rear drive axles..... 1810 Spicer drive shaft
 Trans to RAD gear box..... 1810 Spicer drive shaft
 RAD gear box to sand drum..... 140-2 chain
 Sand drum to main drum..... 140-2 chain
 Main drum to hydromatic [if equipped]..... 100-3 chain

Carrier..... 5 axle, 2 steer axles, 2 drive axles, one tag axle

Fuel Capacity..... 180 gallons
 Maximum travel speed..... 55 mph
 Service Winch..... 12,000 lb capacity
 Workfloor..... Hydraulic fold and unfold.
 Drillers console positions..... Deck level to 30'



COOPER SP600 MOBILE SERVICING RIG





114-300-8-T MAST:

Certification: API 4F, 5th Edition
Clear height: 114'

MAXIMUM STATIC LOAD:
300,000 lbs on 8-lines
265,000 lbs on 6-lines

CAPACITY, TUBING BOARD:
22,320 ft—2 7/8" EUE tubing (3.668 dia)
13,392 ft—3 1/2" EUE tubing (4.50 dia)
7812 ft—4 1/2" EUE tubing (5.536 dia)

ROD BOARD CAPACITY:
(25' joints in triple stands)
208 stands (15,600')—3/4" sucker rod
156 stands (11,700')—1" sucker rod

Maximum wind rate: 57 knots (66 mph)



Cooper SP600 Mobile Servicing Rig

Certifications. API 4F
Mast capacity. 300,000 lbs [8-lines]
Mast height. 114'
Tubing/rods. Double tubing/triple rods

Drawworks: [single drum version available]

Main Drum. 42" dia x 12" wide x 1 1/8" grooving with P0324 clutch
Assist Brake—[two options]. 202 Hydromatic brake.
224 Water Cooled brake. [shaft mounted]

Sand Drum. 42" dia x 8" wide with P0224 clutch
Sand Drum Capacity. 16,000' of 9/16" cable
Assist Brake—[two options]. 202 Hydromatic brake.
224 Water Cooled brake. [shaft mounted]

Drawworks brake system. Conventional band brakes.
Drawworks brake system cooling. Open circuit splash or optional water circulating system.
Engine HP rating. 550

Power Flow:

Trans to rear drive axles. 1810 Spicer drive shaft
Trans to RAD gear box. 1810 Spicer drive shaft
RAD gear box to sand drum. 140-2 chain
Sand drum to main drum. 140-2 chain
Main drum to hydromatic [if equipped]. 100-3 chain

Carrier. 6 axle, 3 steer axles, 2 drive axles, one tag axle.
Fuel Capacity. 180 gallons
Maximum travel speed. 55 mph
Service Winch. 12,000 lb capacity
Workfloor. Hydraulic fold and unfold.
Drillers console positions. Deck level to 30'.



117-350-8-U MAST:
 Certification: API 4F, 5th Edition
 Clear height: 117'

MAXIMUM STATIC LOAD:
 350,000 lbs on 8-lines

CAPACITY, TUBING BOARD:
 24,552 ft—2 7/8" EUE tubing
 14,508 ft—3 1/2" EUE tubing
 8,928 ft—4 1/2" EUE tubing

ROD BOARD CAPACITY:
 [25' joints in triple stands]
 208 stands (15,600')—3/4" sucker rod
 156 stands (11,700')—1" sucker rod

Maximum wind rate 57 knots (66 mph)



Cooper SP650 Mobile Servicing Rig

Certifications API 4F
 Mast capacity 350,000 lbs [8-lines]
 Mast height 117'
 Tubing/rods Double tubing/triple rods

Drawworks: [single drum version available]

Main Drum 42" dia x 12" wide x 1 1/8" grooving with P0324 clutch
 Sand Drum 42" dia x 8" wide with P0224 clutch
 Sand Drum Capacity 16,000' of 9/16" cable
 Assist Brake—[two options] 202 Hydromatic brake.
 224 Water Cooled brake. [shaft mounted]
 Drawworks brake system Conventional band brakes.
 Drawworks brake system cooling Water circulating system.
 Engine HP rating 550

Power Flow:

Trans to rear drive axles 1810 Spice drive shaft
 Trans to RAD gear box 1810 Spicer drive shaft
 RAD gear box to sand drum 140-2 chain
 Sand drum to main drum 140-2 chain
 Main drum to hydromatic [if equipped] 100-3 chain

Carrier 6 axle, 3 steer axles, 2 drive axles, one tag axle.
 Fuel Capacity 180 gallons
 Maximum travel speed 55 mph
 Service Winch 12,000 lb capacity
 Workfloor Hydraulic fold and unfold.
 Drillers console positions Deck level to 30'.



117-350-8-U MAST:

Certification: API 4F, 5th Edition
Clear height: 117'

MAXIMUM STATIC LOAD:
350,000 lbs on 8-lines

CAPACITY, TUBING BOARD:
24,552 ft—2 7/8" EUE tubing
14,508 ft—3 1/2" EUE tubing
8,928 ft—4 1/2" EUE tubing

Maximum wind rate: 57 knots (66 mph)

SUBSTRUCTURE:

Working height: 17'
Clearance under rotary beams: 13'-3"
Maximum Setback Capacity: 300,000 lbs
Maximum Rotary Capacity: 425,000 lbs
Maximum Simultaneous Capacity: 725,000 lbs
Rotary Table Size: 27 1/2"



Cooper TR750 Mobile Drilling Rig

Rated horsepower, engine (Two) 425 hp / 2,100 rpm x Two
Trailer Four axle
Diameter, wireline 1 1/8"
Road Traveling dimensions
(excluding tow vehicle) 70'-5" long x 11'-2" wide x
15'-2" high
Trailer dimensions (excluding mast) 62'-11" long x 11'-2" wide x
10'-11" high

DRAWWORKS SYSTEM

MAIN DRUM

Brake rim diameter x width 42" dia x 12" wide
Model, clutch WPT P0-324
Maximum fastline pull 47,000 lbf
Brake rim cooling Water circulating

ASSIST BRAKE (other options available)

Brake model WPT 324 water cooled brake



124-450-10-T MAST:

Certification: API 4F,
Clear height: 124'

MAXIMUM STATIC LOAD:

450,000 lbs on 10-lines
340,000 lbs on 8-lines

CAPACITY, TUBING BOARD:

12,000 ft- 5" DP (6.5 dia)
Tubing board finger position
Parallel to mast face (side rack)

Maximum wind rate: 57 knots (66 mph)

SUBSTRUCTURE:

Working height: 21'
Clearance under rotary beams: 17'-6"
Design: Cantilever
Maximum Setback Capacity: 300,000 lbs
Maximum Rotary Capacity: 425,000 lbs
Maximum Simultaneous
Capacity: 725,000 lbs
Rotary Table Size: 27 1/2"



Cooper TR1000 Drilling Rig

Rated horsepower, engine (Two)550 hp / 2,100 rpm x Two
TrailerFour axle
Diameter, wireline1 1/8"
Road Traveling dimensions for
Trailers and Mast
(excluding tow vehicle)75'-6" long x 12'-2"
wide x 15'-9" high

DRAWWORKS SYSTEM

MAIN DRUM

Brake rim diameter x width46" dia x 12" wide
Barrel diameter x width20" dia x 41" wide (excluding lebus)
Model, clutchPO-330
Maximum fastline pull53,000 lbf
Brake rim coolingWater circulating

ASSIST BRAKE (other options available)

Brake modelWPT 324 water cooled brake



Base Beams

Dragon Rig Sales and Services, LTD. offers base beams specifically designed for its Cooper SP Series of mobile workover rigs.

Dragon Rig Sales and Services does not offer base beams for other OEM mobile workover rigs.

Operation on a base beam will derate the hook load and wind capacity of the mast.

Dimensions 40' long x 5' wide x
15" tall

Weight. 17,000 lbs





440 Triplex Mud Pump

Package Dmensions 25' long x 8'-3" wide x 7'-10" high
 Package Weight..... 20,500 lbs
 Rated engine horsepower 425 hp
 Transmission Allison HT750DR
 Rated input horsepower to pump 440 hp
 Fuel tank capacity 100 gal
 Charge pump Dragon Products 5x4x14 centrifugal, belt drive

MUD PUMP SPECIFICATIONS

Model Dragon Products W-440
 Input horsepower rating..... 440 hp
 Pump speed rating 320 cycles per minute (960 SPM)
 Stroke length 6"
 Fluid end working pressure 5000 psi
 Discharge connection size 2"
 Suction connection size 6"
 Accessory connection size 2" NPT
 Maximum piston and liner size 4 1/2"
 Valve size API-4
 Piston rod end SA-4
 Internal gear ratio 4.578:1
 Pump weight 8940 lbs

Also available:
360 Triplex Mud Pump

W-440			HP	260	320	380	440
			SPM	510	660	810	960
LINER SIZE	MAX PSI	GPS	GPM				
3	5000	.184	94	121	149	204	
3 1/2	4045	.25	127	165	202	240	
3 3/4	3523	.287	146	189	232	275	
4	3130	.326	167	215	264	313	
4 1/4	1917	.368	188	243	299	354	
4 1/2	1710	.413	211	273	335	397	



Dimensions:

41' long x 9'-4" wide x 10' high

Capacity: 225 bbl

- 35 bbl slug compartment
- 140 bbl suction compartment
- 50 bbl shale shaker compartment

Weight: 30,000 lbs

Engine: New John Deere 4045—140 hp
Equipped with PTO

Centrifugal pump:
Dragon Products-8 x 6 x 11—250 series
with mechanical seal.

Hopper: Dragon Products—6"

Shaker:
Hydraulic drive—4'x5'—single screen

Mud guns: Dragon Products mud guns
3" dual nozzle . One is slug compart-
ment. Two in suction compartment

Fuel tank: 150 gal

Hydraulic tank: 40 gal



225BBL Premix Mud System

Active Capacity - 225BBL (This includes a 35BBL slug compartment) Dimensions - 41' long x 8' 6" wide.

Construction- Three runner 8" I-beam skid. 3/8" Plate floors. 1/4" Heavy crimp walls. Handrail, walkway and stairs. 5" square tubing top runner.

Equipment - The 6 x 8 centrifugal pump is powered by a new John Deere 4.5 liter electric engine. It is also equipped with a 6" hopper, 3 mud guns, hydraulic shale shaker, and all necessary internal piping and manifolds.

OILFIELD ACCESSORIES

Authorized Distributor of McKissick Block & Parts

MCKISSICK BLOCKS



We are strong in Well Servicing & Drilling Drawworks Brake Blocks

Indutex SA, a Peruvian Company founded in 1980, is a major manufacturer of industrial textiles and friction materials and is a member of the FRENOSA group, one of the largest friction product makers in South America.

Their Oilfield Brake Block and Woven Brake Linings are manufactured in one piece with uniform surfaces and densities. Each are woven in Fletcher special looms under proper tension to insure a tightly woven and superior quality product. The woven blocks and linings are manufactured in natural fibers.

To maximize resistance and conductivity the brake blocks are woven with yarns strengthened by brass or copper wires which allows high temperatures at friction points to dissipate. These metallic inserts can be incorporated throughout the block thickness or only in the backing, leaving the friction surface free of them.

Brake Block Technical Specifications

Available sizes: Width 1" - 13"

Thickness 3/16" - 1 1/2"

PHYSICAL PROPERTIES	BRAKE BLOCK
SPEC GRAVITY (gr x cc)	1.25
APPARENT DENSITY (lb/in ³)	0.044
HARDNESS, GROGAN	20-23
COMPRESS, psi x 5% deflect	550-850

COEFFICIENT OF FRICTION	BRAKE BLOCK
NORMAL	.51
HOT	.34
WEAR RATE (in ³ /HP-hr)	.008
FRICTION CODE	FE
MAX UNIT PRESSURE PSI	250
TEMPERATURE DEGREES F	
MAX (INTERMITTENT)	600° F
MAX (CONTINUOS)	550° F
MAX RUBBING SPEED	5000 f x m



The woven textiles are impregnated with special saturates and treated in ovens under strict controls to achieve a complete and uniform curing of the impregnate. The curing process creates a continuous and stable friction coefficient in extreme temperatures.

Brake blocks are arced to the correct rim diameter, easy to install, and are recommended for the deepest digging under the most severe conditions. Engineered for security, friction capacity and longer life - Indutex manufactures some of the best brake block on the market today.

**Master Distributor for
Indutex in the USA.**

Drawworks System

Our long term maintenance and upkeep is one of the most economical in the industry.

The draw works consists of a right angle drive gear box, draw works frame and shield, main drum and brake system, sand drum and brake system (if equipped), crown saver, etc. All draw works clutches are placed outboard for easy clutch maintenance. The brake rims of main drum and sand drum are one-piece forged by alloy steel with proper hardness, anti-wear, and heat-resistant performance. All rotating components at deck level are covered with heavy-duty protective guards that include access panels for necessary maintenance.

Drawworks Frame Features:

Utilization of square/rectangular tubing for the base of the frame.

One piece drawworks side plates.

Increases the rigidity and strength of the drawworks.

Creates better seal area for chain guards.

Allows for removal of each drum independently without having to remove upper side walls as on a conventional Cooper.

Centralized lubrication point located on each side of the drawworks frame.

Allows for application of grease to all bearings and brake system components from the outside.

All guards use the same diameter bolts.

Allows removal of every guard on the drawworks with a 3/4" wrench or socket.

Clutches are mounted outside the drawworks walls for easier maintenance.

Right Angle Drive Gearbox:

The right angle drive gear box mainly consists of input shaft, output shaft, ring and pinion spiral taper gears, output, bearing seat, box body, support, flange, sprocket and various bearings. The input and output shafts are machined from premium alloy steel. Double row tapered roller bearings and single row radial cylindrical bearings are used for high strength and good performance. It is designed with group seals and oil bath splash lubrication to ensure sealing performance and reliable lubrication. The sprocket teeth are flame hardened and quenched to provide long lasting and reliable performance.

Right Angle Drive Features:

Integrated torque tube.

Creates a stronger assembly with better torque transfer than a conventional Cooper chain coupling.

Main Drum and Sand Drum (if equipped):

The main drum assembly is complete with split grooving and double fast line provisions (if requested). Both the main drum and sand drum shafts are machined from premium alloy steel for strength and durability. The main drum and sand drum brake systems are a mechanical band brake configuration. After finish machining and assembly, the main drum is dynamically balanced and the sand drum (if equipped) is static balanced to ensure smooth operation.

Brake System Features:

Brake rollers are used to roll the band in place for engagement and disengagement of brakes.

Makes for smoother brake action and easier adjustment.

Easier removal of brake bands.

Cooper 250 HP

Double Drum Model

Main Drum

Brake rim diameter x width38" dia x 10" wide

Barrel diameter x width16" dia x 38" wide
(excluding lebus)

Model, clutchWPT PO-224
(two plate clutch)

Grooving7/8" or 1"

SANDLINE DRUM

Brake rim diameter x width38" dia x 8" wide

Barrel diameter x width12 3/4" dia x 43" wide

Model, clutchWPT PO-124
(single plate clutch)

Sand drum capacity14,000' of 9/16" cable

Brake Rim CoolingSplash

Assist brakeAir cooled disc brake

Brake caliper modelKobelt 5026

Brake rotor measurements40" dia x 7" braking
surface x 4" thick

Cooper 400 HP

Double and Single Drum Models Available

Main Drum

Brake rim diameter x width42" dia x 10" wide
 Barrel diameter x width16" dia x 38" wide
 (excluding lebus)
 Model, clutchWPT PO-224
 (two plate clutch)

Grooving1"

SANDLINE DRUM

Brake rim diameter x width42" dia x 8" wide
 Barrel diameter x width16" dia x 43" wide
 Model, clutchWPT PO-124
 (single plate clutch)

Sand drum capacity16,000' of 9/16" cable
 Brake Rim CoolingSplash
 Assist brakeAir cooled disc brake
 Brake caliper modelKobelt 5026
 Brake rotor measurements40" dia x 7" braking
 surface x 4" thick

Cooper 550 HP

Double and Single Drum Models Available

Main Drum

Brake rim diameter x width42" dia x 12" wide
 Barrel diameter x width16" dia x 38" wide
 [excluding lebus] or
 18" dia x 38" wide
 [excluding lebus]
 Model, clutchWPT PO-324
 (three plate clutch)

Grooving1"

SANDLINE DRUM

Brake rim diameter x width42" dia x 8" wide
 Barrel diameter x width16" dia x 43" wide
 Model, clutchWPT PO-224
 (two plate clutch)

Sand drum capacity16,000' of 9/16" cable
 Brake Rim CoolingSplash
 Assist brake—Option AAir cooled disc brake
 Brake caliper modelKobelt 5028
 Brake rotor measurements48" dia x 10" braking sur-
 face x 4" thick

Assist brake—Option BHydromatic
 ModelParmac 202
 ClutchWPT PO-224
 (two plate clutch)
 Assist brake—Option CShaft Mounted Water
 Cooled Brake
 ModelWPT 224 (two plate)

Cooper 600 HP

Double and Single Drum Models Available

Main Drum

Brake rim diameter x width42" dia x 12" wide
 Barrel diameter x width18" dia x 38" wide
 (excluding lebus)
 Model, clutchWPT PO-324
 (three plate clutch)

Grooving1" or 1 1/8"

SANDLINE DRUM

Brake rim diameter x width42" dia x 8" wide
 Barrel diameter x width16" dia x 43" wide
 Model, clutchWPT PO-224
 (two plate clutch)

Sand drum capacity16,000' of 9/16" cable
 Brake Rim CoolingSplash or Water
 Circulating
 Assist brake—Option AHydromatic
 ModelParmac 202
 ClutchWPT PO-224
 (two plate clutch)
 Assist brake—Option BShaft Mounted Water
 Cooled Brake
 ModelWPT 224 (two plate)

Cooper 600 HP

Main Drum42" dia x 12" wide x 1 1/8"
 grooving with PO324 clutch
 Sand Drum42" dia x 8" wide with PO224
 clutch
 Sand Drum Capacity16,000' of 9/16" cable
 Assist Brake—[two options]. . . 202 Hydromatic brake.
 224 Water Cooled brake. [shaft
 mounted]
 Drawworks brake system Conventional band brakes.
 Drawworks brake system Water circulating system
 cooling

Cooper 750/1000 HP

Single Drum Model Available

Main Drum

Brake rim diameter x width46" dia x 12" wide
 Barrel diameter x width20" dia x 41" wide
 (excluding lebus)
 Model, clutchWPT PO-330
 (three plate clutch)

Grooving1 1/8"

Brake Rim CoolingWater Circulating
 Assist brakeShaft Mounted Water
 Cooled Brake
 ModelWPT 324 (three plate)

DRAGON MAST

71-150-4-T MAST

Certification: API 4F,
Clear height: 71'
Maximum static load:
150,000 lbs on 4-lines

96-205-6-T MAST

Certification: API 4F,
Clear height: 96'
Maximum static load:
205,000 lbs on 6-lines
180,000 lbs on 4-lines

97-205-6-FS MAST

Certification: API 4F,
Clear height: 97'
Maximum static load:
205,000 lbs on 6-lines
180,000 lbs on 4-lines

105-250-8-T MAST

Certification: API 4F, 5th
Edition
Clear height: 105'
Maximum static load:
250,000 lbs on 8-lines
225,000 lbs on 6-lines

114-300-8-T MAST:

Certification: API 4F,
5th Edition
Clear height: 114'
Maximum Static Load:
300,000 lbs on 8-lines
265,000 lbs on 6-lines

117-350-8-U MAST

Certification: API 4F, 5th
Edition
Clear height: 117'
Maximum hook load:
350,000 lbs on 8-lines

124-450-10-T MAST

Certification: API 4F,
Clear height: 124'
Maximum hook load:
450,000 lbs on 10-lines







DRAGON WELL SERVICE



& DRILLING RIG EQUIPMENT





1203 Industrial Park Drive
Victoria, TX 77905
Phone 361-576-0682

960 S. Pagewood
Odessa, Texas 79761
Phone : 432-332-8426

dragonproductsltd.com

USA Toll-free: 1-800-231-8198